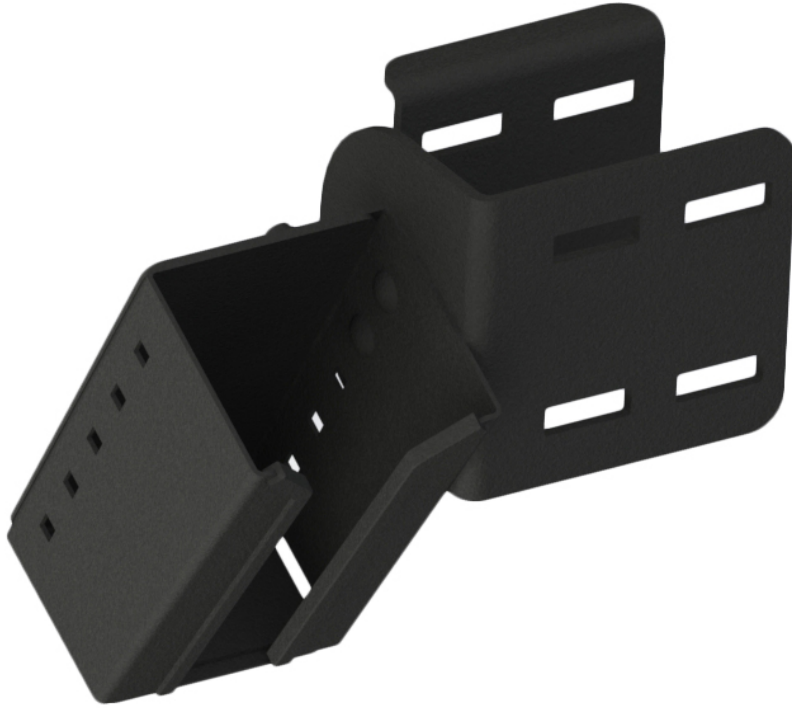


# Scanner Pocket Mount with Small Back Plate

Item #7160-1306



This scanner mount is designed to support your scanner or handheld computer in a rugged environment by holding it securely to the overhead guard leg of your lift vehicle. It is adjustable in width, and offers 3 mounting orientations from the overhead guard leg or one of our extension bars.

## Weight

5.21 lbs. / 2.36 kg

## Dimensions

Width: 4.5 in. / 11.43 cm.

Height: 2.5 in. / 6.35 cm.

Length: 6.0 in. / 15.24 cm.

## Features

- Designed to hold most handheld computers and scanners
- Adjustable to fit 3.5" to 4.5" width and set at 2.5" tall
- Designed to be orientated inside, outside, or inline with the overhead guard leg
- Attaches to rectangular overhead guard legs that are 1.5 in to 2.5 in (3.81 cm to 6.35 cm) wide
- Can also be mounted to our horizontal and vertical extension bars

# Warranty

Limited Lifetime Warranty